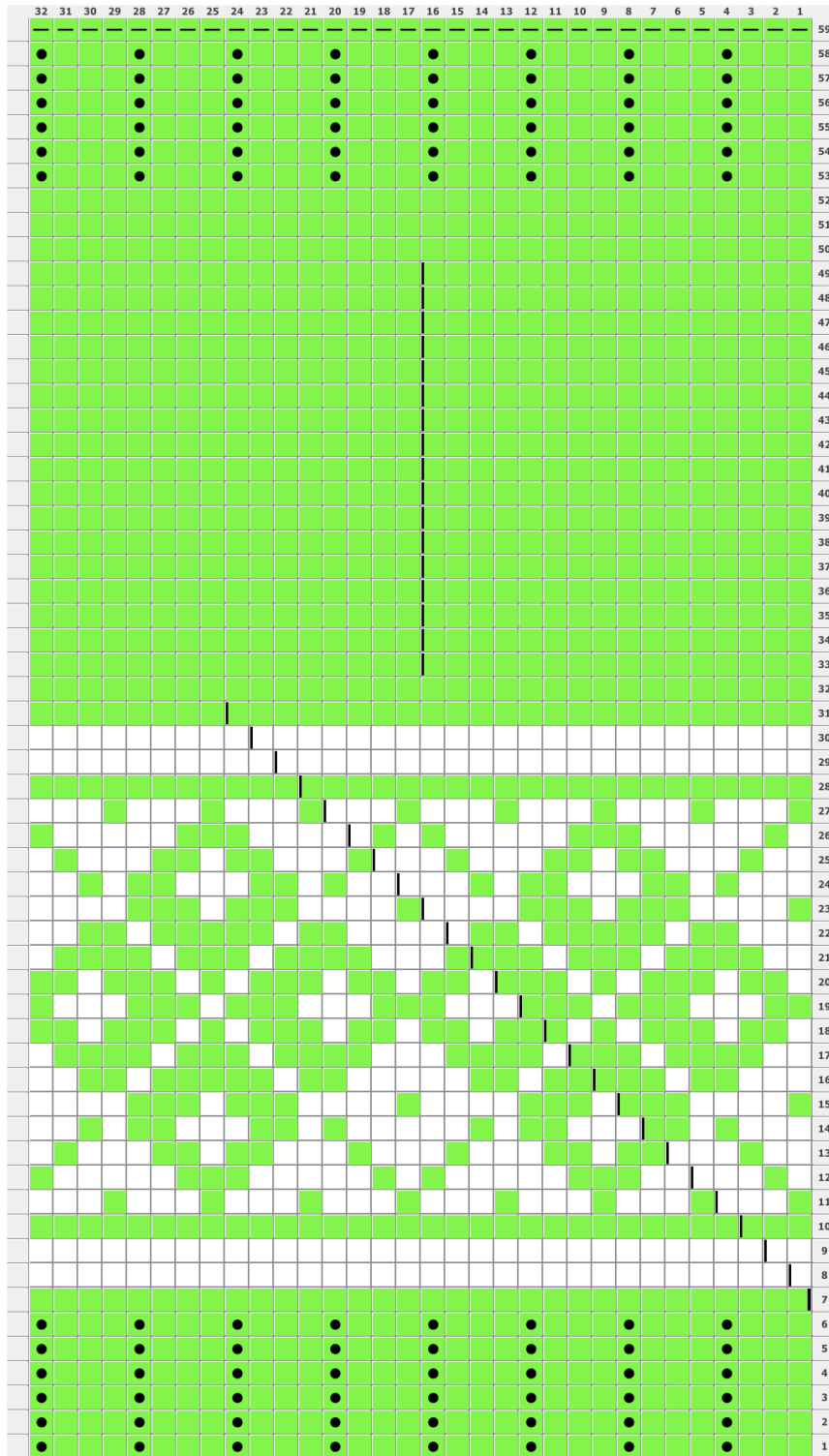


DOTTED ARGYLE MITTS

BY LUCKY FIND SALVAGE COMPANY



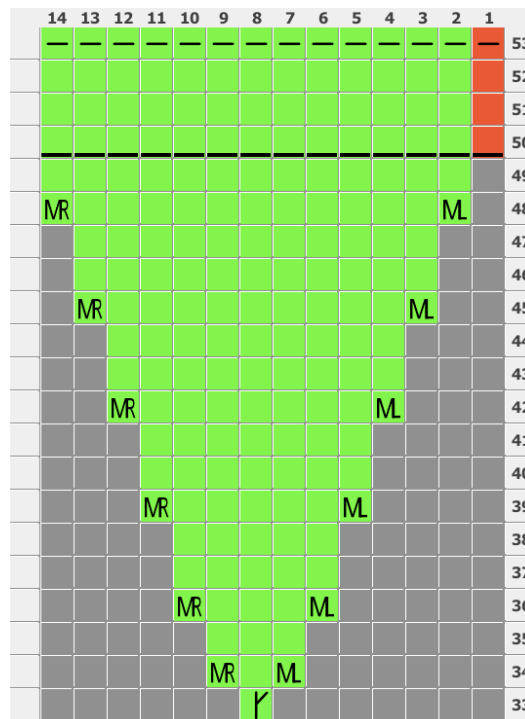
Created in Knit Visualizer (www.knitfoundry.com)

WRIST AND HAND CHART



DOTTED ARGYLE MITTS

BY LUCKY FIND SALVAGE COMPANY



Created in Knit Visualizer (www.knitfoundry.com)

THUMB CHART

*

Suggested Yarn: Noro Kureyon (#182 shown) and contrasting colored yarn of similar weight (Paton's Merino Tweed in Chestnut used here.)

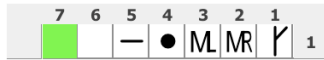
Finished Size: Women's small. Change needle size to increase mitt size.

Gauge: 18 sts and 24 rows in 4" stockinette

Instructions: Cast on 32 stitches. Join into round without twisting. Follow chart. "Aunt Jean's Jogless Join" by Cindy Sauerwald *highly recommended*. (See *Best Of Vogue Knitting: 25 Years of Articles, Techniques and Expert Advice* for this fantastic trick. The short version: knit to marker, remove marker, slip next stitch, replace marker, repeat. The black stepped lines in my chart are for those who want to use this method.) **On round 33:** at black line after stitch #16, begin thumb chart. After knitting round 49 of thumbchart, place thumb stitches on waste yarn and continue around hand chart to end. **Note:** I did not backward loop cast-on an extra stitch to accommodate the gap from the thumb gusset, in order to keep my finishing 3-1 hand rib count accurate. I sewed up the hole when weaving in ends. **Round 50 of thumb chart:** place held stitches on dpns, pick up and knit one stitch in gusset hole region, and finish chart as shown. (The red stitch in the thumb chart is an extra picked up stitch.) Weave in ends and sew up holes. Careful of your stranding tension or the cuffs turn into tourniquets.

DOTTED ARGYLE MITTS

BY LUCKY FIND SALVAGE COMPANY



Legend:

- Y **kfb**
 Knit into the front and back of the stitch
- MR **make one right**
 Place a firm backward loop over the right needle, so that the yarn end goes towards the back
- M **make one left**
 Place a firm backward loop over the right needle, so that the yarn end goes towards the front
- **purl**
 purl stitch
- **Stretchy Bind Off**
 K1 *k1, put 2 st back on L needle, k2tog tbl*
- **knit**
 knit stitch
- knit**
 knit stitch

Created in Knit Visualizer (www.knitfoundry.com)



© 2008 Lucky Find Salvage Company