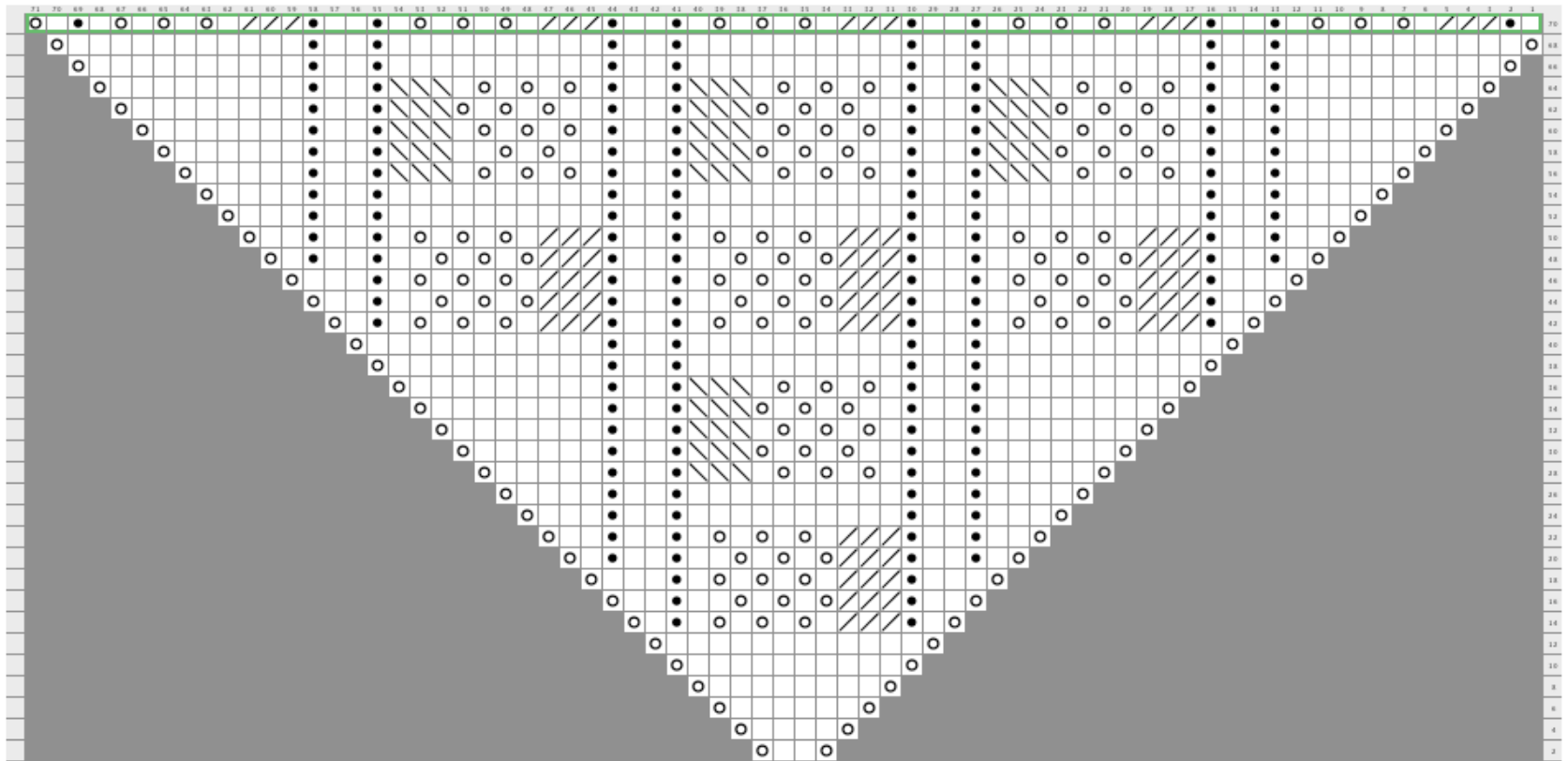


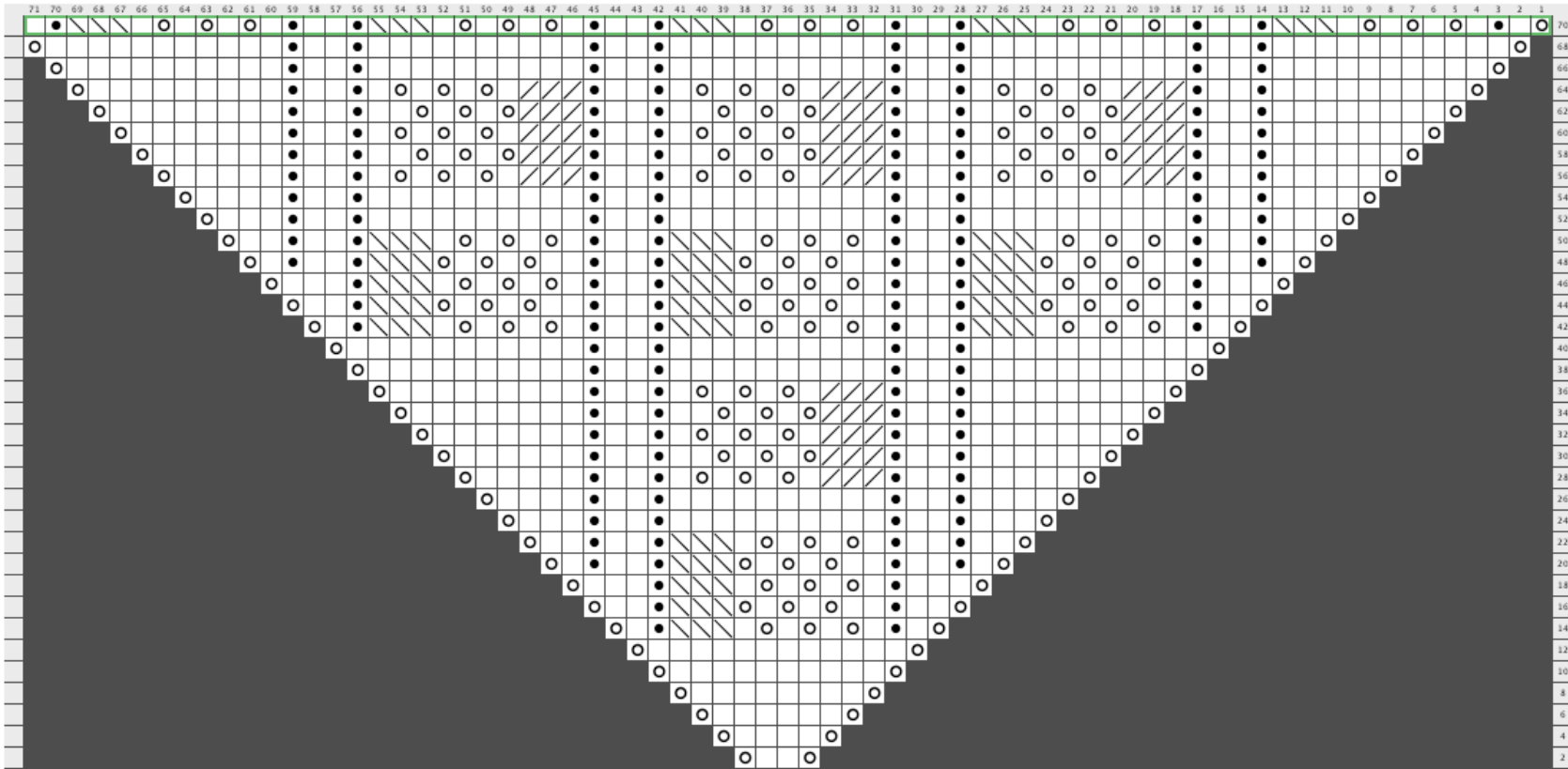
SEAS SHAWL
BY LUCKY FIND SALVAGE COMPANY



© 2009 Lucky Find Salvage Company

Right Side of Shawl

SEAS SHAWL
BY LUCKY FIND SALVAGE COMPANY



© 2009 Lucky Find Salvage Company

Left Side of Shawl

Cast on 11 stitches. (2 border stitches, 2 right side triangle stitches, 3 center stitches, 2 left side triangle stitches, 2 border stitches)

Border stitches (not charted): (2 each side of triangle): RS - K2/ WS - KI, PI then end PI, KI on other edge.

Center stitches(not charted): (3 between right and left side of shawl): KI, PI, KI on RS/ P3 on WS.

Row 1 and all odd numbered wrong side rows: purl

SEAS SHAWL BY LUCKY FIND SALVAGE COMPANY

Row 2: Begin chart. Stitch count will be Row # x 2 + 7.

Every 28 rows will add another two pattern stitch repeats. Keep knitting till you want to stop, or you run out of yarn. This shawl can be as big as you want it to be, and any gauge will work. Use whatever needle size looks best with the yarn you choose.

For a wavy end edge effect (see photo below), finish with the *pattern sequence* of Row # 64, purl back, then use a stretchy cast off.

Legend:

- knit
knit stitch

- purl
purl stitch

- k2tog
Knit two stitches together as one stitch

- yo
Yarn Over

- ssk
Slip one stitch as if to knit, Slip another stitch as if to knit. Insert left-hand needle into front of these 2 stitches and knit them together

© 2009 Lucky Find Salvage Company

