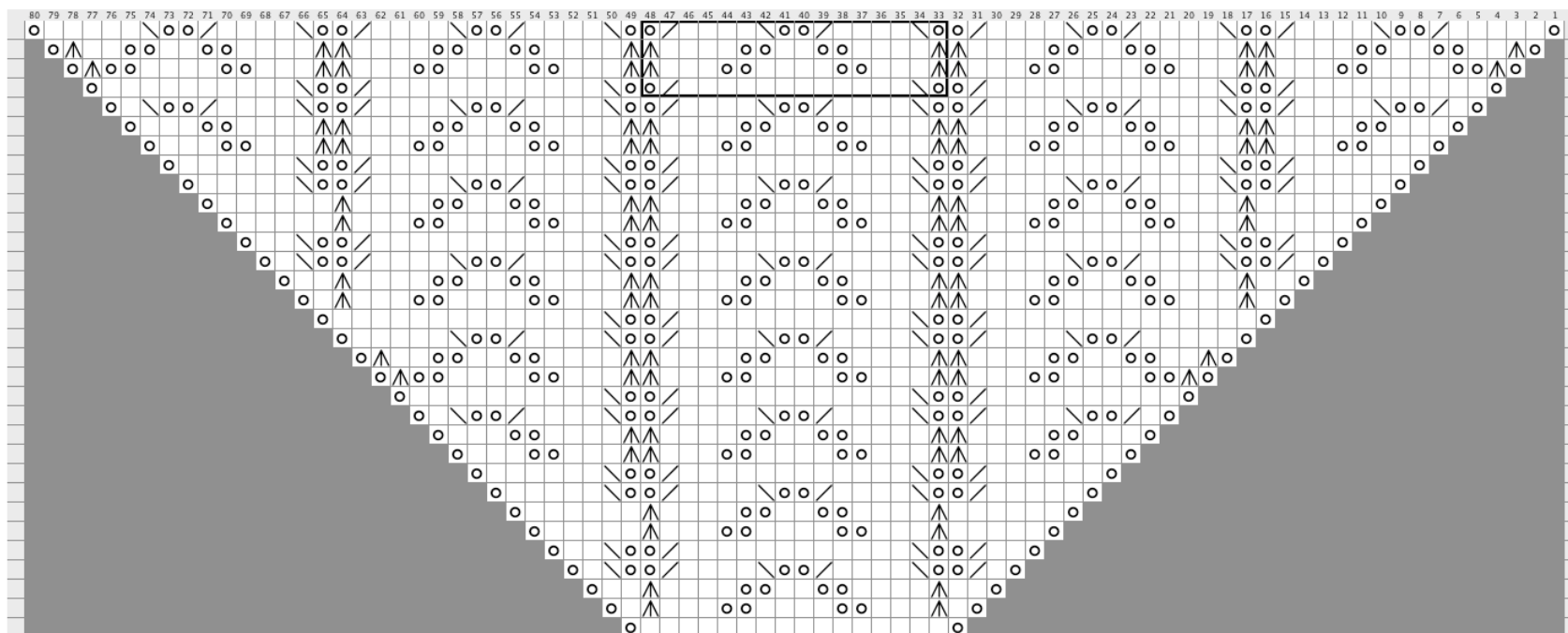


# SEA DRIFT SHAWL

## BY LUCKY FIND SALVAGE COMPANY



© 2009 Lucky Find Salvage Company

### CHART A: Body of Shawl

**Blocked Size:** 17" depth, 90" circumference

**Gauge:** 16 stitches and 20 rows in 4" in blocked stockinette using DK yarn and US #7/4.5mm circular needles.  
Cast on **54** stitches.

**Row 1 (and all odd numbered WS rows):** Purl.

*Work double yarn overs on wrong side as follows: purl first loop, knit into back of second loop.*

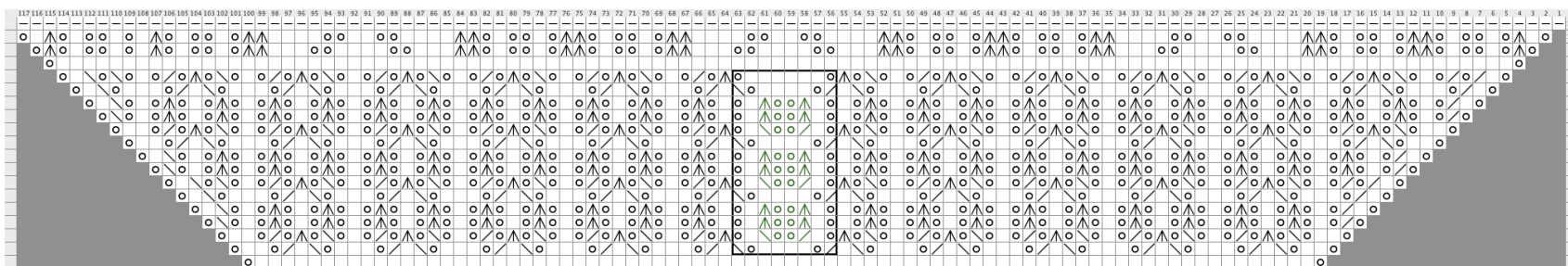
*(Border stitches not shown — **RS:** K2, **WS:** K1, P1. Dividing stitches not shown — **RS:** K1, **WS:** P1)*

**Row 2:** Begin chart — **(K2)**YO, K16, YO, **K1**, YO, K16, YO, **K1**, YO, K16, YO **(K2)**

Follow **Chart A** for 64 rows, then begin **Chart B**.

# SEA DRIFT SHAWL

## BY LUCKY FIND SALVAGE COMPANY



© 2009 Lucky Find Salvage Company

### CHART B: Border of Shawl




© 2009 Lucky Find Salvage Company


# SEA DRIFT SHAWL

## BY LUCKY FIND SALVAGE COMPANY


### Legend:

 **No Stitch**  
Placeholder – No stitch made.


---

 **yo**  
Yarn Over


---

 **knit**  
knit stitch


---

 **ssk**  
Slip one stitch as if to knit, Slip another stitch as if to knit. Insert left-hand needle into front of these 2 stitches and knit them together

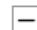
---

 **k2tog**  
Knit two stitches together as one stitch

---

 **Central Double Dec**  
Slip first and second stitches together as if to knit. Knit 1 stitch. Pass two slipped stitches over the knit stitch.

---

 **Stretchy Bind Off**  
K1 \*k1, put 2 st back on L needle, k2tog tbl\*

---

© 2009 Lucky Find Salvage Company